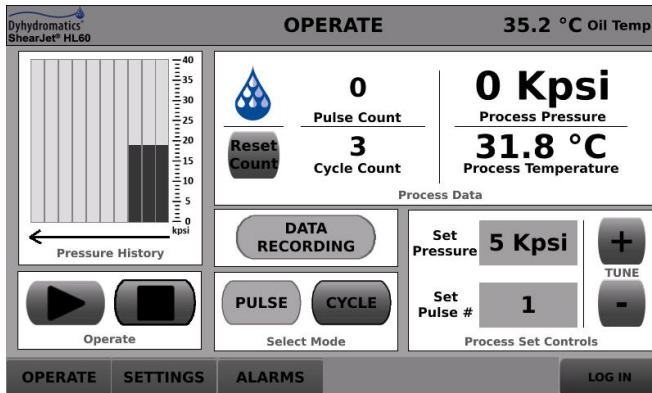


## ELECTRIC HYDRAULIC HIGH SHEAR HOMOGENIZER

For Processing Samples as Low as 3 mL

### New and Improved HMI!

- Increased flow rate
- Superior cooling through specially designed product heat exchanger



The ShearJet HL60 electric hydraulic processor is a unique R&D model designed to process samples as small as 3 mLs in distinct passes or continuous runs. Multiple samples may be processed in a short time span. Small dead volume, fewer high pressure connections and self-priming leads to reduced waste. The HMI touchscreen display puts simplicity at your fingertips, displaying relevant information in real time.

### Performance:

- Multiplier pump creates unique pressure profile
- Specially designed product heat exchanger ensures clean, superior cooling
- Proprietary fixed-geometry diamond Reaction Chamber® module with specially designed micro channels achieves superior, consistent, uniform, repeatable mean particle size reduction
- Durable, robust design allows for continuous operation
- Data acquisition via USB or Ethernet

### Easy-to-clean:

- Minimum connections allow for easy cleaning

### Economy:

- Save on expensive APIs
- Process samples quickly
- Low maintenance cost
- Minimal seals and metallic connections
- Diamond chamber for longer life

## Specifications

Minimum sample size:	3 mL (minimum with cooling jacket 5 mL)
Working sample size:	3-500 mL and up
Pressure:	5-30 Kpsi (345-2068 bar)*
Stroke:	1 mL
Output*:	64 mL/min @ 30 Kpsi (2068 bar)*
HMI:	7" Touch screen
Power:	Electric hydraulic 230 VAC, 50 Hz, 1pH, 12 A 110 VAC, 60 Hz, 1 pH, 14 A
Noise level:	68 decibels; more quiet than competitive equipment
Operating time:	System can run anywhere from seconds to hours
Noise level:	68 decibels; more quiet than competitive equipment
Dimensions:	28 L" x 16 W" x 24 H" (71,1 x 40,6 x 61,0 cm). Small foot print saves valuable laboratory space!

Buna-N is a registered trademark of E. I. DuPont. Luer-Lok" and "Luer-slip" are registered trademarks of Becton Dickinson.

## Features

Features for HL60	Standard Model	Standard, EP Model	Premium Model	Premium, EP Model
Glass reservoir 100 mL with sanitary connection	💧	💧		
Stainless steel reservoir 100 mL			💧	💧
Inlet thermocouple			💧	💧
Two 10 mL syringes	💧	💧	💧	💧
Luer lock connections	💧	💧	💧	💧
Ceramic plunger	💧	💧	💧	💧
Inline pressure transducer			💧	💧
Diamond Reaction Chamber® module for longer life and wear resistant to abrasive applications	💧	💧	💧	💧
Jacketed helical heat exchanger	💧	💧	💧	💧
Touchscreen HMI with advanced features	💧	💧	💧	💧
Tools & spares	💧	💧	💧	💧
Chiller for cooling product heat exchanger	option	option	option	option
Gaskets in TFE, Buna-N®, EPDM, or EPR	option	option	option	option
Pharma-grade product contact parts		💧		💧
FAT/SAT	option	option	💧	💧
IQ/OQ	option	option	option	option
Onsite installation and operator training	💧	💧	💧	💧

## HMI

- Easier to use touchscreen
- Improved Data logging
- Export data recording via USB or FTP Client
- Access levels
- Historic data graph
- Calibration input
- Allows operator to set process duration in pulse mode. System stops automatically when completed.

\*Dependent on Reaction Chamber module size.



## Dyhydromatics Corporate Headquarters

63 Great Road, Suite 103  
Maynard, MA 01754  
Phone +1 978 461 0200 • Fax: +1 978 461 0201  
Customer Service: (Option 4)  
info@dyhydromatics.com  
Sales: sales@dyhydromatics.com

## Dyhydromatics European Head Office

Kelterstrasse 9, 75236 Kaempfelbach, Germany  
Customer Service Europe:  
Phone +49 7231 167 4048  
Sales: info-europe@dyhydromatics.com

## Dyhydromatics, India

A-7, Mangal Society, Shreenagar  
Wagle Estate, Thane (W) - 400604, India  
Phone +91 77381 42553  
Email: info-india@dyhydromatics.com

FORCE BLUE is the only nonprofit organization in the world that provides "mission therapy" for former combat divers by retraining, retooling and deploying them on

missions of environmental conservation, preservation and restoration. We are pleased to support FORCE BLUE by donating a portion of proceeds from every new equipment sale.

